

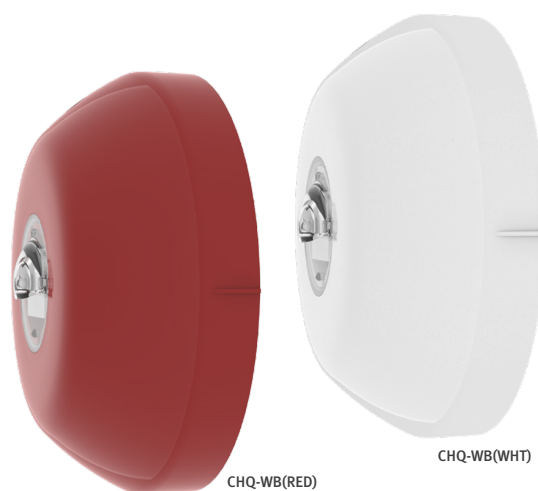
# ESP intelligent VADS

## CHQ-WB

### ADDRESSABLE LOOP-POWERED WALL BEACON

#### Features

- ▶ Loop powered
- ▶ Single loop address via TCH-B200
- ▶ High Intensity LED technology
- ▶ 0.5/1 Hz flash frequency
- ▶ Choice of 2 LED colours (red or white)
- ▶ Approved to AS7240.23 – Category ‘W’
- ▶ High efficiency
- ▶ Selectable light output\*1
- ▶ Operating voltage 17-41 V dc
- ▶ PSU Powered option\*1.



#### Description

An addressable loop-powered wall beacon, with a high intensity LED and a custom designed free-form optic which produces a highly visible flash. Coverage includes 5, 5.5 and 7 sqm\*2. The unit is designed to fit the YBN-R/3, YBN-R/3(SCI) or the YBO-BS base sounder and is available with an ivory, white or red casing with red or white LEDs.

Compatible Bases

Specification	
Operating Voltage	17 ~ 41 V dc
Quiescent Current (typ)	250 µA
Current when Beacon active	See page 3
Operating Temperature Range	-10 °C to +50 °C
Storage Temperature Range	-30 °C to +70 °C
Maximum Humidity	95% RH - Non Condensing (at 40°C)
Colour/Case Material	Red, White / PC+ABS
Compatible Bases	White case - YBN-R/3(WHT), YBN-R/3(WHT)-SCI, YBO-R/SCI(WHT-SNDR), YBO-BS(WHT) (base sounder) Red case - YBO-R/3(RED), YBO-R/SCI(RED)
Lens Material	PC
Ingress Protection Rating	IP21 (IP33 when used inconjunction with CHQ-WPK Weatherproofing Kit)
Weight (g)/Dimensions (mm)	120 / D100 x H41
Base Fixing Centres (mm)	48 ~ 74

## How to choose your Hochiki VAD

Our VAD ratings comprise three parts, X-Y-Z

- ▶ Where X denotes the category, either “O” for Open, “W” for Wall or “C” for ceiling
- ▶ Where Y denotes the maximum mounting height (m)
- ▶ Where Z is the width and length (m) of the coverage floor area.

For example C-3-5 means the VAD is in the Ceiling category, can be mounted at a maximum ceiling height of 3 metres and produce a 5 metre diameter coverage.

What type of VAD?	Which case colour?	Which LED colour	Product	AS7240.23 Raings *3		
Base Sounder Beacon	Ivory case	White LEDs	YBO-BSB2/WL	'O' Rated		
		Red LEDs	YBO-BSB2/RL			
	White case	White LEDs	YBO-BSB2(WHT)/WL			
		Red LEDs	YBO-BSB2(WHT)/RL			
Wall Sounder Beacon	Red case	White LEDs	CHQ-WSB2/WL			
		Red LEDs	CHQ-WSB2/RL			
	White case	White LEDs	CHQ-WSB2(WHT)/WL			
		Red LEDs	CHQ-WSB2(WHT)/RL			
				0	1	2
Ceiling Beacon	Ivory case	Red LEDs	CHQ-CB/RL	C-3-1.5	C-3-8.6	C-3-10
		White LEDs	CHQ-CB/WL	C-3-6.5	C-3-7.9	C-3-10
			CHQ-CB/WL-15	'0'	C-3-11.4	C-3-15.1
	White case	Red LEDs	CHQ-CB(WHT)/RL	C-3-1.5	C-3-8.6	C-3-10
		White LEDs	CHQ-CB(WHT)/WL	C-3-6.5	C-3-7.9	C-3-10
			CHQ-CB(WHT)/WL-15	'0'	C-3-11.4	C-3-15.1
	Red case	Red LEDs	CHQ-CB(RED)/RL	C-3-1.5	C-3-8.6	C-3-10
		White LEDs	CHQ-CB(RED)/WL	C-3-6.5	C-3-7.9	C-3-15.1
			CHQ-CB(RED)/WL-15	'0'	C-3-11.4	C-3-15.1
	Wall Beacon	Ivory case	Red LEDs	CHQ-CB/RL	'0'	W-2.4-5
White LEDs			CHQ-CB/WL	W-2.4-5	W-2.4-5	W-2.4-5.5
White case		Red LEDs	CHQ-CB(WHT)/RL	'0'	W-2.4-5	W-2.4-5.5
		White LEDs	CHQ-CB(WHT)/WL	W-2.4-5	W-2.4-5.5	W-2.4-7
Red case		Red LEDs	CHQ-CB(RED)/RL	'0'	W-2.4-5	W-2.4-5.5
		White LEDs	CHQ-CB(RED)/WL	W-2.4-5	W-2.4-5.5	W-2.4-7

For CHQ-CB / WL & RL Default settings is C-3-7.5, for CHQ-CB / WL-15 Default setting is C-3-15

\*3 All ratings are all based on 0.5Hz frequency.

## Current when Beacon Active

CHQ-CB / WB&RL & CHQ-WB / WL & RL	mA	6	12	17
CHQ-CB / WL-15	mA	6	17	38
CHQ-WSB2 / WL&RL	mA (Beacon Only)		7 (one setting only)	
YBO-BSB2 / WL&RL	mA (Beacon Only)		7 (one setting only)	

Note: Our VAD product codes feature “WL” which means white LEDs and “RL” which means red LEDs.